

Allegheny Plateau
Audubon Society

June 5, 2021

PA State Game Lands 26
and
Beaverdale Sportsman's
Club Outing

This PowerPoint presentation supplements the outing article in the Chickadee Chatter with additional photos of the outing participants and the flora and fauna seen that day.

Thanks to Tom Kuehl for photography and text, Laura Jackson for edits, and all those who attended and made this day special!





With leaf-out complete, birds were more heard than seen at SGL 26.

A male Chestnut-sided Warbler and a male Rose-breasted Grosbeak were two of just 26 species tallied.

eBird checklist link:

<https://ebird.org/pa/checklist/S89649692>



Comparing Notes

With so much experience in the group, the discussions were informative and enjoyable.



Photo by Brian M. Wargo

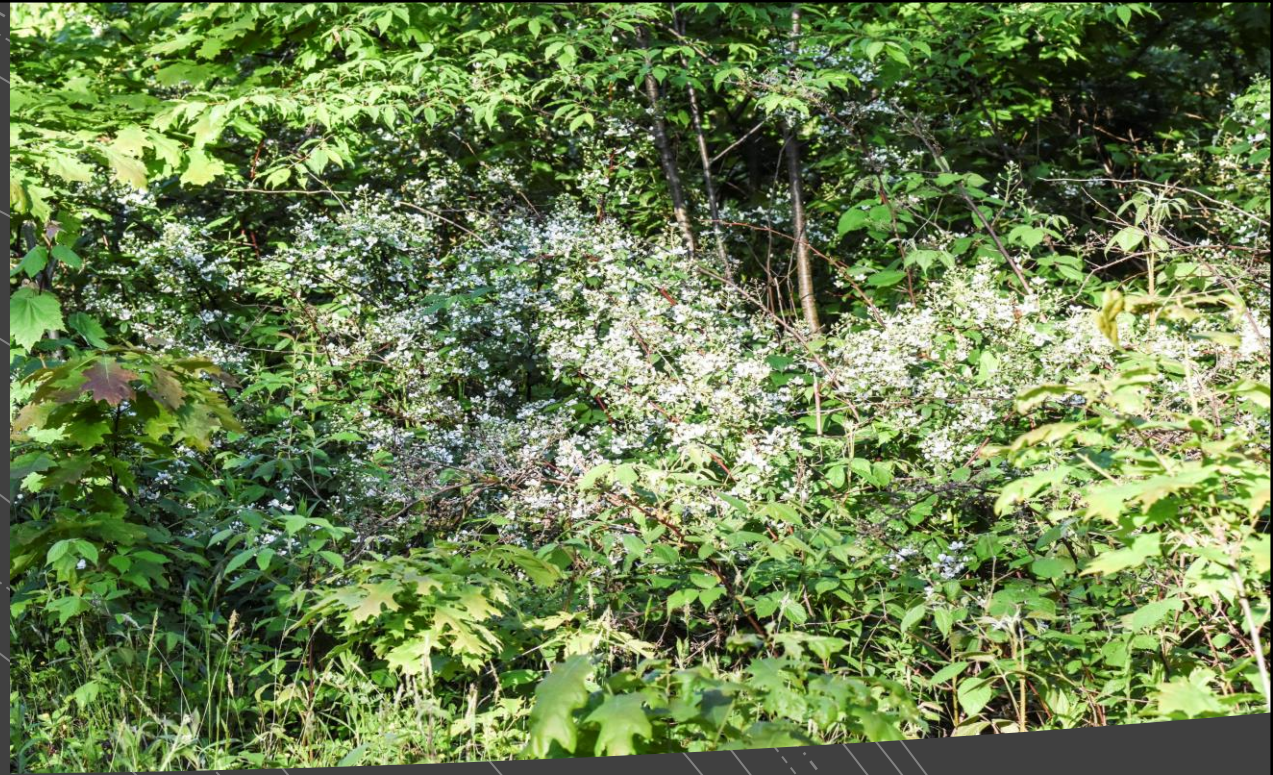


Plants were a bit more cooperative for photos, although some challenge and debate on their identification by the many naturalists on the outing.

Red Elderberry – past blooming and now developing fruit.



Wild Pink
Azalea –
which was
gloriously in
bloom!



Blackberry was also in bloom, and the abundance should make for some happy Black Bears this summer.





The subject
of debate:
Wild Black
Chokecherry
in bloom.



An appropriate sighting for an organization with a focus on managing a hawk watch – **Yellow Hawkweed.**



A member of the Azure Complex

Sorting out Spring and Summer Azures and several similar species in this group can be a challenge. We are settling on Appalachian Azure for this butterfly – we are certainly in its range and timing of the sighting is also appropriate as it files in mid-May to early June in a time range between the peaks for Spring and Summer Azure.



Big and beautiful
butterflies:

Tiger Swallowtail (on the left) and Spice Bush
Swallowtail (in the photo on the right).



With so much to see and discuss, not surprising that the group got well spread out during the outing.



And probably the crowd favorite for the outing was this male Wood Turtle.



Maybe a close second is this way cool string of American Toad eggs in the road pothole vernal pool.



The group
had an
impressive
collection of
experts!

Photo by Brian M. Wargo



No
Pennsylvania
State Lands
visit would
be complete
without
seeing
Coyote
scat.....



On to the
Beaverdale
Sportsman
property
where Adam
led the Group
on a
wandering
trek through
the grounds.



Greg had us looking down more than up, so not surprised to not find that an eBird Checklist was not done. However, one of the location's treasures was certainly busy making its CHEbek call – **Least Flycatcher.** (photo stolen from All About Birds)



Greg also
had us
looking
under
This Green
Frog under
the foliage
by the pond.



And looking in as well:
Trout, bass and bluegills
in the pond.

Why didn't we bring fishing poles?



Flora around
the pond –
Yellow and
Blue Flag Iris.



Common
Wood Sorrel



A Red-spotted
Newt Salamander
and Wood Frog
tadpole was in the
woodland pond.

Dragonfly species that hawked the ponds that day: The orange Painted Skimmer and the appropriately named Common Whitetail.





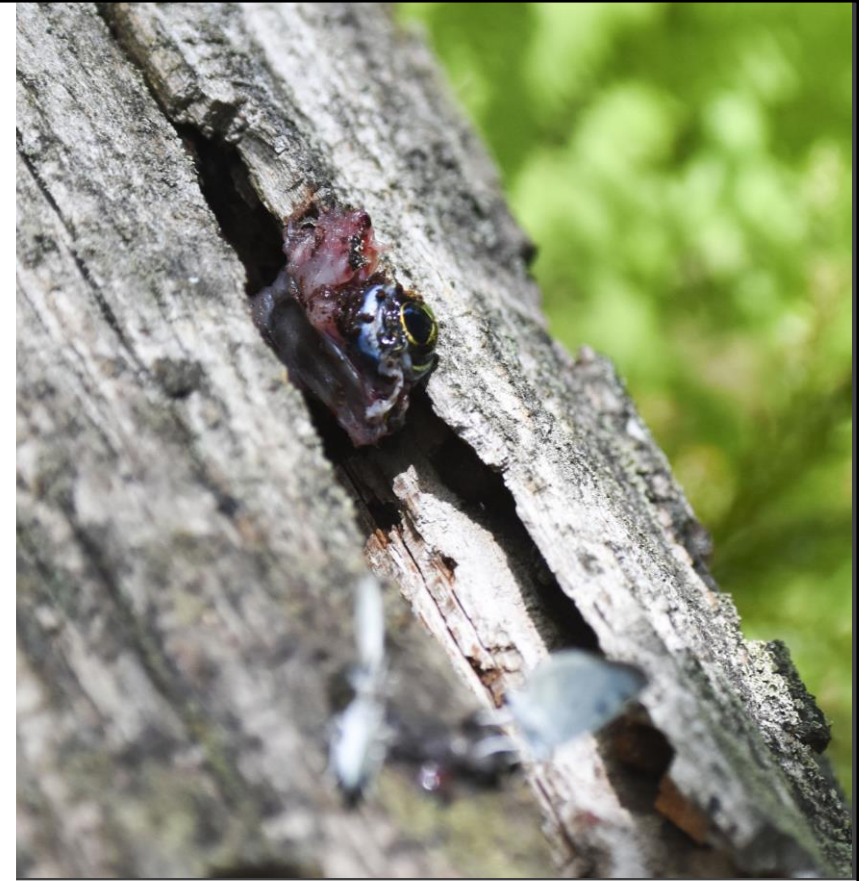
Another dragonfly species found was this male Blue Dasher, which is very much like a Pondhawk, however using the black tip on the tail and the dark part to the body to make the ID as a Blue Dasher.



Another
amphibian
found -
Pickerel
Frog.



Hey, its Spring, so
love in the air for
these American
Toads in the pond.



A gruesome discovery after spotting puddling Bluish Spring Moths – the remains of a frog, including the un-eaten innards and the separated eye – yuck!!



To end on a more pleasant way – Blue Eyed Grass, which is actually a native wildflower, not a type of grass.

We hope to
see you at
the next
outing!

- The original article can be found on our website:
www.alleghenyplateauaudubon.org.